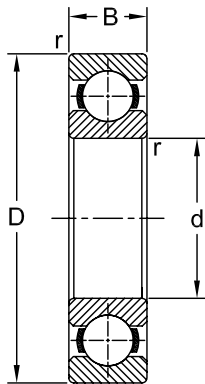


Ball Bearings – Deep Groove, Single Row

Inch Series



Dimensions inch (mm)				Load Rating kN		Designation	M
d	D	B	r	Dynamic (C)	Static (C ₀)		
0.500	1.3125	0.3750	0.0315 (0.8)	7.0	3.0	RLS 4	
	1.6250	0.6250	0.0630 (1.6)	12.1	5.6	RMS 4	
0.625	1.5625	0.4375	0.0315 (0.8)	10.9	5.0	RLS 5	
	1.8125	0.6250	0.0630 (1.6)	12.6	5.6	RMS 5	
0.750	1.8750	0.5625	0.0630 (1.6)	14.2	6.6	RLS 6	
	2.0000	0.6875	0.0630 (1.6)	16.5	7.8	RMS 6	
0.875	2.0000	0.5625	0.0630 (1.6)	14.4	6.6	RLS 7	
	2.2500	0.6875	0.0630 (1.6)	19.2	9.2	RMS 7	
1.000	2.2500	0.6250	0.0630 (1.6)	18.6	8.9	RLS 8	
	2.5000	0.7500	0.0945 (2.4)	22.1	10.6	RMS 8	
1.125	2.5000	0.6250	0.0630 (1.6)	20.2	10.0	RLS 9	
	2.8125	0.8125	0.0945 (2.4)	30.8	15.8	RMS 9	
1.250	2.7500	0.6875	0.0630 (1.6)	27.7	13.9	RLS 10	
	3.1250	0.8750	0.0945 (2.4)	37.7	19.5	RMS 10	
1.375	2.5625	0.5625	0.0630 (1.6)	16.6	8.5	XLJ 1.3/8	
	3.0000	0.6875	0.0630 (1.6)	30.2	15.7	RLS 11	
	3.5000	0.8750	0.0945 (2.4)	45.3	23.9	RMS 11	
1.500	2.6875	0.5625	0.0630 (1.6)	14.3	7.5	XLJ 1.1/2	
	3.2500	0.7500	0.0945 (2.4)	34.8	17.8	RLS 12	
	3.7500	0.9375	0.0945 (2.4)	49.5	26.2	RMS 12	
1.625	2.8750	0.5625	0.0630 (1.6)	14.9	8.2	XLJ 1.5/8	

d	Dimensions			Load Rating		Designation	M
	inch (mm)			kN			
	D	B	r	Dynamic (C)	Static (Co)		
	3.5000	0.7500	0.0945 (2.4)	38.7	20.0	RLS 13	
	4.0000	0.9375	0.0945 (2.4)	55.0	29.9	RMS 13	
1.750	3.0000	0.5625	0.0630 (1.6)	21.8	12.2	XLJ 1.3/4	
	3.7500	0.8125	0.0945 (2.4)	42.7	22.3	RLS 14	
	4.2500	1.0625	0.0945 (2.4)	59.5	32.7	RMS 14	
1.875	3.1875	0.6250	0.0630 (1.6)	22.7	13.1	XLJ 1.7/8	
	4.0000	0.8125	0.0945 (2.4)	50.5	27.8	RLS 15	
	4.5000	1.0625	0.0945 (2.4)	69.0	38.7	RMS 15	
2.000	3.3125	0.6250	0.0630 (1.6)	22.7	13.1	XLJ 2	
	4.0000	0.8125	0.0945 (2.4)	50.5	27.8	RLS 16	
	4.5000	1.0625	0.0945 (2.4)	69.0	38.7	RMS 16	
2.250	3.5625	0.6250	0.0630 (1.6)	29.4	17.0	XLJ 2.1/4	
	4.5000	0.8750	0.0945 (2.4)	60.0	32.7	RLS 18	
	5.0000	1.2500	0.1260 (3.2)	85.0	48.5	RMS 18	
2.375	3.7500	0.6875	0.0630 (1.6)	29.6	18.5	XLJ 2.3/8	
2.500	3.8750	0.6875	0.0630 (1.6)	31.8	19.6	XLJ 2.1/2	
	5.0000	0.9375	0.0945 (2.4)	65.5	36.8	RLS 20	
	5.5000	1.2500	0.1260 (3.2)	96.5	55.5	RMS 20	
2.750	4.1250	0.6875	0.0630 (1.6)	24.5	15.9	XLJ 2.3/4	
	5.2500	0.9375	0.0945 (2.4)	70.0	40.9	RLS 22	
	6.2500	1.3750	0.1260 (3.2)	118.0	71.5	RMS 22	
3.000	4.5000	0.7500	0.0945 (2.4)	41.1	26.1	XLJ 3	•
	5.7500	1.0625	0.0945 (2.4)	81.5	48.3	RLS 24	•
	7.0000	1.5625	0.1575 (4.0)	138.0	89.5	RMS 24	
3.250	4.7500	0.7500	0.0945 (2.4)	30.5	21.2	XLJ 3.1/4	
	6.0000	1.0625	0.0945 (2.4)	87.5	52.5	RLS 26	•
	7.5000	1.5625	0.1575 (4.0)	139.0	89.5	RMS 26	•
3.375	7.5000	1.5625	0.1575 (4.0)	139.0	89.5	RMS 27	•
3.500	5.0000	0.7500	0.0945 (2.4)	34.1	23.5	XLJ 3.1/2	•
	6.5000	1.1250	0.1260 (3.2)	100.0	60.5	RLS 28	
	8.1250	1.7500	0.1575 (4.0)	169.0	120.0	RMS 28	
3.750	5.2500	0.7500	0.0945 (2.4)	40.6	28.8	XLJ 3.3/4	•
	6.7500	1.1250	0.1260 (3.2)	106.0	66.5	RLS 30	
	8.2500	1.7500	0.1575 (4.0)	169.0	120.0	RMS 30	
4.000	5.6250	0.8750	0.0945 (2.4)	41.4	30.3	XLJ 4	•
	7.2500	1.2500	0.1260 (3.2)	120.0	74.5	RLS 32	

d	Dimensions			Load Rating		Designation	M
	inch (mm)			kN			
	D	B	r	Dynamic (C)	Static (Co)		
	8.5000	1.7500	0.1575 (4.0)	170.0	120.0	RMS 32	
4.250	6.0000	0.8750	0.0945 (2.4)	48.4	36.5	XLJ 4.1/4	•
	7.5000	1.2500	0.1260 (3.2)	127.0	81.5	RLS 34	
	8.7500	1.7500	0.1890 (4.8)	171.0	120.0	RMS 34	
4.500	6.2500	0.8750	0.0945 (2.4)	55.5	40.2	XLJ 4.1/2	
	8.0000	1.3125	0.1260 (3.2)	147.0	98.5	RLS 36	•
	9.3750	2.0000	0.1890 (4.8)	203.0	155.0	RMS 36	
4.750	6.5000	0.8750	0.0945 (2.4)	57.0	42.4	XLJ 4.3/4	
	8.2500	1.3125	0.1260 (3.2)	134.0	87.0	RLS 38	
	10.0000	2.0000	0.1890 (4.8)	209.0	160.0	RMS 38	
4.875	7.0000	1.0000	0.0945 (2.4)	60.0	45.5	XLJ 4.7/8	
5.000	7.0000	1.0000	0.0945 (2.4)	68.0	50.0	XLJ 5	
	9.0000	1.3750	0.1260 (3.2)	154.0	107.0	RLS 40	
	10.0000	2.0000	0.1890 (4.8)	209.0	160.0	RMS 40	
5.250	7.2500	1.0000	0.0945 (2.4)	51.0	39.6	XLJ 5.1/4	
5.500	7.5000	1.0000	0.0945 (2.4)	57.0	47.5	XLJ 5.1/2	
	9.5000	1.3750	0.1260 (3.2)	153.0	107.0	RLS 44	
	11.0000	2.0000	0.1890 (4.8)	221.0	174.0	RMS 44	•
5.750	7.7500	1.0000	0.0945 (2.4)	53.5	43.5	XLJ 5.3/4	
6.000	8.0000	1.0000	0.0945 (2.4)	54.5	45.5	XLJ 6	•
	10.5000	1.5625	0.1575 (4.0)	180.0	134.0	RLS 48	
	12.0000	2.2500	0.1890 (4.8)	259.0	218.0	RMS 48	
6.500	8.7500	1.1250	0.1260 (3.2)	66.0	55.0	XLJ 6.1/2	•
	11.0000	1.5625	0.1575 (4.0)	188.0	145.0	RLS 52	
	13.0000	2.5000	0.1890 (4.8)	286.0	251.0	RMS 52	
6.750	9.0000	1.1250	0.1260 (3.2)	70.0	60.0	XLJ 6.3/4	•
7.000	9.5000	1.2500	0.1260 (3.2)	77.5	65.0	XLJ 7	•
	12.0000	1.7500	0.1575 (4.0)	221.0	180.0	RLS 56	•
	13.5000	2.5000	0.1890 (4.8)	306.0	278.0	RMS 56	•
7.250	9.7500	1.2500	0.1260 (3.2)	79.5	67.0	XLJ 7.1/4	
7.500	10.0000	1.2500	0.1260 (3.2)	79.0	68.0	XLJ 7.1/2	•
	12.5000	1.7500	0.1575 (4.0)	231.0	195.0	RLS 60	•
	14.5000	2.7500	0.1890 (4.8)	340.0	322.0	RMS 60	•
8.000	10.7500	1.3750	0.1260 (3.2)	94.5	82.5	XLJ 8	•
	13.0000	1.7500	0.1575 (4.0)	230.0	195.0	RLS 64	•

	Dimensions			Load Rating		Designation	M
	inch (mm)			kN			
	d	D	B	r	Dynamic (C)		
	15.0000	2.7500	0.1890 (4.8)	366.0	358.0	RMS 64	•
8.500	11.5000	1.5000	0.1260 (3.2)	108.0	95.5	XLJ 8.1/2	•
	14.0000	2.0000	0.1890 (4.8)	263.0	232.0	RLS 68	•
	16.0000	3.0000	0.1890 (4.8)	396.0	401.0	RMS 68	•
9.000	12.0000	1.5000	0.1260 (3.2)	110.0	98.0	XLJ 9	•
	14.5000	2.0000	0.1890 (4.8)	275.0	251.0	RLS 72	•
	17.0000	3.0000	0.1890 (4.8)	415.0	445.0	RMS 72	•
9.500	12.7500	1.6250	0.1575 (4.0)	127.0	115.0	XLJ 9.1/2	•
	15.1250	2.0000	0.1890 (4.8)	287.0	271.0	RLS 76	•
10.000	13.2500	1.6250	0.1575 (4.0)	130.0	120.0	XLJ 10	•
	15.7500	2.0000	0.1890 (4.8)	285.0	271.0	RLS 80	•
	18.5000	3.2500	0.1890 (4.8)	455.0	490.0	RMS 80	•
10.500	14.0000	1.7500	0.1575 (4.0)	145.0	133.0	XLJ 10.1/2	•
	16.6250	2.2500	0.1890 (4.8)	338.0	339.0	RLS 84	•
11.000	14.5000	1.7500	0.1575 (4.0)	148.0	139.0	XLJ 11	•
	17.5000	2.2500	0.1890 (4.8)	335.0	339.0	RLS 88	•
	20.0000	3.5000	0.1890 (4.8)	540.0	623.0	RMS 88	•
11.500	15.2500	1.8750	0.1575 (4.0)	169.0	160.0	XLJ 11.1/2	•
	18.0000	2.3750	0.1890 (4.8)	371.0	390.0	RLS 92	•
12.000	16.0000	2.0000	0.1890 (4.8)	190.0	182.0	XLJ 12	•
	18.5000	2.6250	0.1890 (4.8)	388.0	412.0	RLS 96	•
	21.5000	3.7500	0.1890 (4.8)	557.0	654.0	RMS 96	•
12.500	16.5000	2.0000	0.1890 (4.8)	195.0	183.0	XLJ 12.1/2	•
	19.0000	2.6250	0.1890 (4.8)	405.0	444.0	RLS 100	•
13.000	17.5000	2.2500	0.1890 (4.8)	218.0	221.0	XLJ 13	•
	20.0000	2.7500	0.1890 (4.8)	420.0	466.0	RLS 104	•
13.500	18.0000	2.2500	0.1890 (4.8)	235.0	240.0	XLJ 13.1/2	•
	20.7500	2.7500	0.1890 (4.8)	438.0	494.0	RLS 108	•
14.000	18.5000	2.2500	0.1890 (4.8)	255.0	245.0	XLJ 14	•
	21.5000	2.8750	0.1890 (4.8)	455.0	525.0	RLS 112	•
14.500	19.5000	2.5000	0.1890 (4.8)	299.0	328.0	XLJ 14.1/2	•
	22.0000	3.0000	0.1890 (4.8)	476.0	562.0	RLS 116	•
15.000	20.0000	2.5000	0.1890 (4.8)	297.0	328.0	XLJ 15	•
	22.5000	3.0000	0.1890 (4.8)	474.0	562.0	RLS 120	•
16.000	21.5000	2.7500	0.1890 (4.8)	323.0	375.0	XLJ 16	•

d	Dimensions			Load Rating		Designation	M
	inch (mm)			kN			
	D	B	r	Dynamic (C)	Static (C ₀)		
	23.7500	3.2500	0.1890 (4.8)	511.0	627.0	RLS 128	•
17.000	22.5118	2.7500	0.1890 (4.8)	329.0	393.0	XLJ 17	•
18.000	24.0000	3.0000	0.1890 (4.8)	360.0	435.0	XLJ 18	•
19.000	25.5000	3.2500	0.1890 (4.8)	410.0	521.0	XLJ 19	•