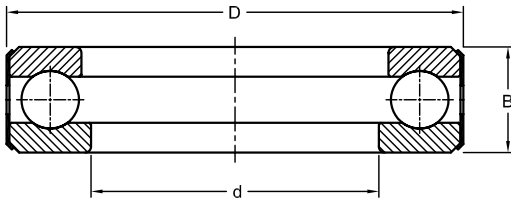


# Ball Bearings – Full Complement, Thrust

## Inch Series



Dimensions			Load Rating		Designation
inch			kN		
d	D	B	Dynamic (C)	Static (C <sub>0</sub> )	
0.500	1.2190	0.5625	14.5	15.4	<b>D 1</b>
0.625	1.3438	0.5625	15.5	20.3	<b>D 3</b>
0.750	1.4688	0.5625	16.0	22.8	<b>D 5</b>
0.875	1.8438	0.6250	24.0	40.3	<b>D 7</b>
1.000	1.9688	0.6250	25.1	43.2	<b>D 9</b>
1.125	2.0940	0.6250	25.8	47.0	<b>D 11</b>
1.250	2.3438	0.6250	27.0	54.4	<b>D 13</b>
1.375	2.4687	0.6250	27.5	58.4	<b>D 15</b>
1.500	2.5938	0.6250	28.3	66.7	<b>D 17</b>
1.750	3.0938	0.8125	39.3	96.0	<b>D 21</b>
2.000	3.3438	0.8125	40.8	107.0	<b>D 25</b>
2.250	3.7190	0.8125	42.0	118.0	<b>D 29</b>
2.438	3.8438	0.8125	43.2	122.5	<b>D 32</b>
2.500	3.9688	0.8125	43.2	129.0	<b>D 33</b>
2.750	4.4690	1.0000	68.5	190.0	<b>D 37</b>
2.813	4.4690	1.0000	68.5	190.0	<b>D 38</b>
3.000	4.5940	1.0000	68.5	190.0	<b>D 39.1/2</b>
3.000	4.7190	1.0000	70.5	198.2	<b>D 40</b>
3.250	4.9690	1.0000	72.6	218.0	<b>D 41</b>