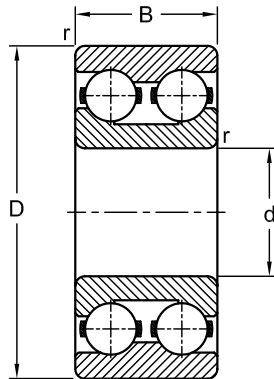


Angular Contact Ball Bearings – Double Row

Metric Series



Dimensions				Load Rating		Designation	ZZ	2RS	M	Polyamide Cage
mm				kN						
d	D	B	r	Dynamic (C)	Static (C ₀)					
15	35	15.9	0.6	11.2	6.8	3202	•	•		
	42	19.0	1.0	15.1	9.2	3302	•	•		
17	40	17.5	0.6	14.0	8.7	3203	•	•		
	47	22.2	1.0	21.2	12.5	3303	•	•		
20	47	20.6	1.0	18.6	12.0	3204	•	•		
	52	22.2	1.1	22.1	14.3	3304	•	•		•
25	52	20.6	1.0	20.3	14.0	3205	•	•		•
	62	25.4	1.1	31.2	20.8	3305	•	•		
30	62	23.8	1.0	28.1	20.0	3206	•	•		
	72	30.2	1.1	45.7	42.5	3306	•	•		
35	72	27.0	1.1	37.1	27.5	3207	•	•		
	80	34.9	1.5	53.9	51.0	3307	•	•		
40	80	30.2	1.1	44.9	33.5	3208	•	•		
	90	36.5	1.5	66.0	64.0	3308	•	•		
45	85	30.2	1.1	47.5	38.0	3209	•	•		
	100	39.7	1.5	72.1	73.5	3309				•
50	90	30.2	1.1	47.5	39.0	3210	•	•		
	110	44.4	2.0	88.0	96.5	3310				
55	100	33.3	1.5	57.2	67.0	3211				
	120	49.2	2.0	95.2	108.0	3311				

Dimensions				Load Rating		Designation	ZZ	2RS	M	Polyamide Cage
mm				kN						
d	D	B	r	Dynamic (C)	Static (Co)					
60	110	36.5	1.5	72.1	85.0	3212				
	130	54.0	2.1	112.0	127.0	3312				
65	120	38.1	1.5	78.1	95.0	3213				
	140	58.7	2.1	128.0	150.0	3313				
70	125	39.7	1.5	76.5	98.0	3214	•	•		•
	150	63.5	2.1	147.0	173.0	3314				
75	130	41.3	1.5	84.2	110.0	3215				
	160	68.3	2.1	157.0	186.0	3315			•	
80	140	44.5	2.0	101.0	134.0	3216	•	•		•
	170	68.3	2.1	176.0	212.0	3316			•	
85	150	49.2	2.0	110.0	146.0	3217	•	•		•
	180	73.0	3.0	194.0	240.0	3317			•	
90	160	52.4	2.0	128.0	173.0	3218	•	•		•
	190	73.0	3.0	220.0	285.0	3318			•	
95	170	55.6	2.1	147.0	204.0	3219				
	200	77.8	3.0	238.0	315.0	3319			•	
100	180	60.3	2.1	157.0	220.0	3220				
	215	82.6	3.0	255.0	355.0	3320			•	
105	225	87.3	3.0	29.8	387.7	3321			•	
110	200	69.8	2.1	190.0	270.0	3222			•	
	240	92.1	3.0	292.0	425.0	3322			•	
120	215	76.0	2.1	250.0	279.0	3224			•	