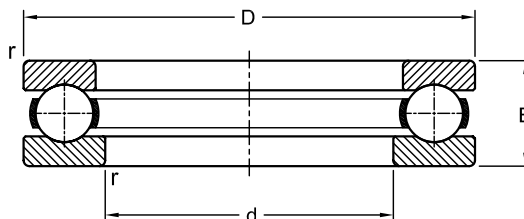
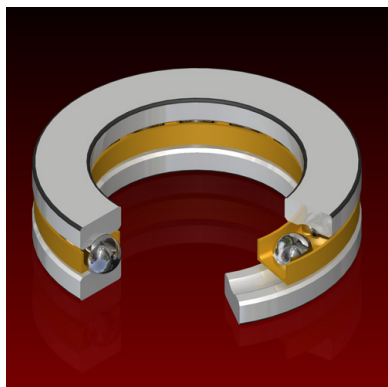


Ball Bearings

Thrust
Metric Series

51



Dimensions				Load Rating		AEC Bearing
mm				kN		
d	D	B	r	Dynamic (C)	Static (C ₀)	
10	24	9	0.3	10.0	14.0	51100
	26	11	0.6	12.7	17.0	51200
12	26	9	0.3	10.4	15.3	51101
	28	11	0.6	13.3	19.0	51201
15	28	9	0.3	9.4	14.0	51102
	32	12	0.6	16.5	25.0	51202
17	30	9	0.3	9.8	15.3	51103
	35	12	0.6	17.2	27.5	51203
20	35	10	0.3	12.7	20.8	51104
	40	14	0.6	22.5	37.5	51204
25	42	11	0.6	15.9	29.0	51105
	47	15	0.6	27.6	50.0	51205
	52	18	1.0	34.5	55.0	51305
	52	24	1.0	55.3	90.0	51405
30	47	11	0.6	16.8	33.5	51106
	52	16	0.6	25.5	47.5	51206
	60	21	1.0	37.7	65.5	51306
	70	28	1.0	72.8	125.0	51406
35	52	12	0.6	17.4	37.5	51107
	62	18	1.0	35.1	67.0	51207
	68	24	1.0	49.4	88.0	51307
	80	32	1.1	87.1	156.0	51407
40	60	13	0.6	23.4	50.0	51108
	68	19	1.0	46.8	98.0	51208
	78	26	1.0	61.8	112.0	51308
	90	36	1.1	112.0	204.0	51408
45	65	14	0.6	24.2	57.0	51109
	73	20	1.0	39.0	80.0	51209
	85	28	1.0	76.1	140.0	51309

Dimensions				Load Rating		AEC Bearing
mm				kN		
d	D	B	r	Dynamic (C)	Static (C ₀)	
	100	39	1.1	130.0	240.0	51409
50	70	14	0.6	25.5	63.0	51110
	78	22	1.0	49.4	106.0	51210
	95	31	1.1	88.4	173.0	51310
	110	43	1.5	159.0	310.0	51410
55	78	16	0.6	30.7	78.0	51111
	90	25	1.0	61.8	134.0	51211
	105	35	1.1	104.0	208.0	51311
	120	48	1.5	178.0	360.0	51411
60	85	17	1.0	35.8	90.0	51112
	95	26	1.0	62.4	140.0	51212
	110	35	1.1	101.0	208.0	51312
	130	51	1.5	199.0	400.0	51412
65	90	18	1.0	37.1	98.0	51113
	100	27	1.0	63.7	150.0	51213
	115	36	1.1	106.0	220.0	51313
	140	56	2.0	216.0	450.0	51413
70	95	18	1.0	37.7	104.0	51114
	105	27	1.0	65.0	160.0	51214
	125	40	1.1	135.0	300.0	51314
	150	60	2.0	234.0	500.0	51414
75	100	19	1.0	44.2	137.0	51115
	110	27	1.0	67.6	170.0	51215
	135	44	1.5	163.0	360.0	51315
	160	65	2.0	251.0	560.0	51415
80	105	19	1.0	44.9	140.0	51116
	115	28	1.0	76.1	190.0	51216
	140	44	1.5	159.0	360.0	51316
	170	68	2.1	270.0	620.0	51416
85	110	19	1.0	46.2	150.0	51117
	125	31	1.0	97.5	250.0	51217
	150	49	1.5	190.0	425.0	51317
	180	72	2.1	286.0	680.0	51417
90	120	22	1.0	59.2	190.0	51118
	135	35	1.1	119.0	300.0	51218
	155	50	1.5	195.0	465.0	51318
	190	77	2.1	307.0	750.0	51418
100	135	25	1.0	85.2	270.0	51120
	150	38	1.1	124.0	320.0	51220
	170	55	1.5	229.0	560.0	51320
	210	85	3.0	371.0	965.0	51420
110	145	25	1.0	87.1	290.0	51122
	160	38	1.1	130.0	360.0	51222
	190	63	2.0	276.0	720.0	51322
	230	95	3.0	410.0	1140.0	51422

Dimensions				Load Rating		AEC Bearing
mm				kN		
d	D	B	r	Dynamic (C)	Static (C ₀)	
130	170	30	1.0	111.0	390.0	51126
	190	45	1.5	186.0	540.0	51226
	225	75	2.1	358.0	1060.0	51326
	270	110	4.0	520.0	1600.0	51426
140	180	31	1.0	111.0	400.0	51128
	200	46	1.5	190.0	570.0	51228
	240	80	2.1	397.0	1220.0	51328
	280	112	4.0	520.0	1600.0	51428
150	190	31	1.0	111.0	400.0	51130
	215	50	1.5	238.0	735.0	51230
	250	80	2.1	410.0	1290.0	51330
	300	120	4.0	559.0	1800.0	51430
160	200	31	1.0	112.0	425.0	51132
	225	51	1.5	242.0	780.0	51232
	270	87	3.0	449.0	1500.0	51332
170	215	34	1.1	133.0	500.0	51134
	240	55	1.5	286.0	930.0	51234
	280	87	3.0	468.0	1600.0	51334
180	225	34	1.1	135.0	530.0	51136
	250	56	1.5	296.0	1000.0	51236
	300	95	3.0	520.0	1830.0	51336
190	240	37	1.1	172.0	655.0	51138
	270	62	2.0	332.0	1160.0	51238
	320	105	4.0	600.0	2200.0	51338
200	250	37	1.1	168.0	655.0	51140
	280	62	2.0	338.0	1220.0	51240
	340	110	4.0	624.0	2400.0	51340
220	270	37	1.1	178.0	735.0	51144
	300	63	2.0	351.0	1320.0	51244
240	300	45	1.5	234.0	965.0	51148
	340	78	2.1	462.0	1860.0	51248
260	320	45	1.5	238.0	1020.0	51152
	360	79	2.1	475.0	2000.0	51252
280	350	53	1.5	319.0	1340.0	51156
	380	80	2.1	494.0	2160.0	51256
300	380	62	2.0	364.0	1600.0	51160
	420	95	3.0	605.0	2750.0	51260
320	400	63	2.0	371.0	1700.0	51164
	440	95	3.0	572.0	2700.0	51264
340	420	64	2.0	377.0	1800.0	51168
	460	96	3.0	605.0	2900.0	51268
360	440	65	2.0	390.0	1900.0	51172
	500	110	4.0	741.0	3800.0	51272

Dimensions				Load Rating		AEC Bearing
mm				kN		
d	D	B	r	Dynamic (C)	Static (C ₀)	
380	460	65	2.0	430.0	2240.0	51176
400	480	65	2.0	440.0	2320.0	51180