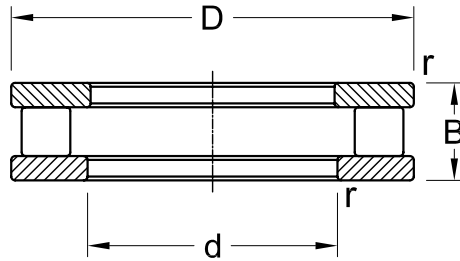
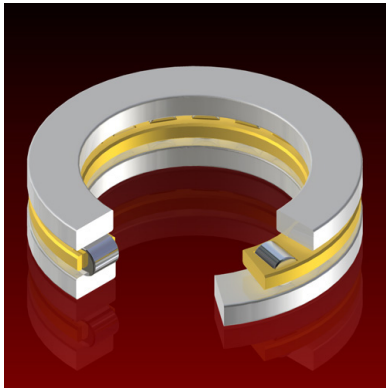


# Cylindrical Roller Bearings

Thrust  
Metric Series

**811, 812**



| Dimensions |     |    |     | Load Rating |                          | AEC Bearing |
|------------|-----|----|-----|-------------|--------------------------|-------------|
| mm         |     |    |     | kN          |                          |             |
| d          | D   | B  | r   | Dynamic (C) | Static (C <sub>0</sub> ) |             |
| 15         | 28  | 9  | 0.3 | 11.2        | 27.0                     | 81102       |
| 17         | 30  | 9  | 0.3 | 11.6        | 29.0                     | 81103       |
| 20         | 35  | 10 | 0.3 | 17.6        | 44.0                     | 81104       |
| 25         | 42  | 11 | 0.6 | 24.0        | 65.5                     | 81105       |
| 30         | 47  | 11 | 0.6 | 24.5        | 69.5                     | 81106       |
|            | 52  | 16 | 0.6 | 50.0        | 134.0                    | 81206       |
| 35         | 52  | 12 | 0.6 | 27.0        | 83.0                     | 81107       |
|            | 62  | 18 | 1.0 | 62.0        | 190.0                    | 81207       |
| 40         | 60  | 13 | 0.6 | 38.0        | 118.0                    | 81108       |
|            | 68  | 19 | 1.0 | 83.0        | 255.0                    | 81208       |
| 45         | 65  | 14 | 0.6 | 40.5        | 132.0                    | 81109       |
|            | 73  | 20 | 1.0 | 86.5        | 270.0                    | 81209       |
| 50         | 70  | 14 | 0.6 | 42.5        | 146.0                    | 81110       |
|            | 78  | 22 | 1.0 | 91.5        | 300.0                    | 81210       |
| 55         | 78  | 16 | 0.6 | 69.5        | 285.0                    | 81111       |
|            | 90  | 25 | 1.0 | 116.0       | 365.0                    | 81211       |
| 60         | 85  | 17 | 1.0 | 80.0        | 300.0                    | 81112       |
|            | 95  | 26 | 1.0 | 137.0       | 465.0                    | 81212       |
| 65         | 90  | 18 | 1.0 | 83.0        | 320.0                    | 81113       |
|            | 100 | 27 | 1.0 | 140.0       | 490.0                    | 81213       |
| 70         | 95  | 18 | 1.0 | 86.5        | 345.0                    | 81114       |
|            | 105 | 27 | 1.0 | 146.0       | 530.0                    | 81214       |
| 75         | 100 | 19 | 1.0 | 75.0        | 290.0                    | 81115       |
|            | 110 | 27 | 1.0 | 125.0       | 440.0                    | 81215       |
| 80         | 105 | 19 | 1.0 | 76.5        | 300.0                    | 81116       |
|            | 115 | 28 | 1.0 | 160.0       | 610.0                    | 81216       |
| 85         | 110 | 19 | 1.0 | 76.5        | 310.0                    | 81117       |
|            | 125 | 31 | 1.0 | 153.0       | 550.0                    | 81217       |

| Dimensions |     |     |     | Load Rating |                          | AEC<br>Bearing |
|------------|-----|-----|-----|-------------|--------------------------|----------------|
| mm         |     |     |     | kN          |                          |                |
| d          | D   | B   | r   | Dynamic (C) | Static (C <sub>0</sub> ) |                |
| <b>90</b>  | 120 | 22  | 1.0 | 104.0       | 415.0                    | <b>81118</b>   |
|            | 135 | 35  | 1.1 | 232.0       | 865.0                    | <b>81218</b>   |
| <b>100</b> | 135 | 25  | 1.0 | 146.0       | 585.0                    | <b>81120</b>   |
|            | 150 | 38  | 1.1 | 224.0       | 830.0                    | <b>81220</b>   |
| <b>110</b> | 145 | 25  | 1.0 | 153.0       | 630.0                    | <b>81122</b>   |
|            | 160 | 38  | 1.1 | 240.0       | 915.0                    | <b>81222</b>   |
| <b>120</b> | 155 | 25  | 1.0 | 160.0       | 680.0                    | <b>81124</b>   |
|            | 170 | 39  | 1.1 | 245.0       | 965.0                    | <b>81224</b>   |
| <b>130</b> | 170 | 30  | 1.0 | 183.0       | 780.0                    | <b>81126</b>   |
|            | 190 | 45  | 1.5 | 335.0       | 1250.0                   | <b>81226</b>   |
| <b>140</b> | 180 | 31  | 1.0 | 193.0       | 850.0                    | <b>81128</b>   |
|            | 200 | 46  | 1.5 | 360.0       | 1400.0                   | <b>81228</b>   |
| <b>150</b> | 190 | 31  | 1.0 | 200.0       | 900.0                    | <b>81130</b>   |
|            | 215 | 50  | 1.5 | 465.0       | 1900.0                   | <b>81230</b>   |
| <b>160</b> | 200 | 31  | 1.0 | 204.0       | 965.0                    | <b>81132</b>   |
|            | 225 | 51  | 1.5 | 480.0       | 2000.0                   | <b>81232</b>   |
| <b>170</b> | 215 | 34  | 1.1 | 260.0       | 1180.0                   | <b>81134</b>   |
|            | 240 | 55  | 1.5 | 540.0       | 2280.0                   | <b>81234</b>   |
| <b>180</b> | 225 | 34  | 1.1 | 270.0       | 1270.0                   | <b>81136</b>   |
|            | 250 | 56  | 1.5 | 550.0       | 2400.0                   | <b>81236</b>   |
| <b>190</b> | 240 | 37  | 1.1 | 310.0       | 1460.0                   | <b>81138</b>   |
|            | 270 | 62  | 2.0 | 695.0       | 2900.0                   | <b>81238</b>   |
| <b>200</b> | 250 | 37  | 1.1 | 310.0       | 1500.0                   | <b>81140</b>   |
|            | 280 | 62  | 2.0 | 720.0       | 3100.0                   | <b>81240</b>   |
| <b>220</b> | 270 | 37  | 1.1 | 335.0       | 1700.0                   | <b>81144</b>   |
|            | 300 | 63  | 2.0 | 750.0       | 3350.0                   | <b>81244</b>   |
| <b>240</b> | 300 | 45  | 1.5 | 475.0       | 2450.0                   | <b>81148</b>   |
|            | 340 | 78  | 2.1 | 1100.0      | 4900.0                   | <b>81248</b>   |
| <b>260</b> | 320 | 45  | 1.5 | 490.0       | 2600.0                   | <b>81152</b>   |
|            | 360 | 79  | 2.1 | 1140.0      | 5300.0                   | <b>81252</b>   |
| <b>280</b> | 350 | 53  | 1.5 | 680.0       | 3550.0                   | <b>81156</b>   |
|            | 380 | 80  | 2.1 | 1160.0      | 5500.0                   | <b>81256</b>   |
| <b>300</b> | 380 | 62  | 2.0 | 850.0       | 4400.0                   | <b>81160</b>   |
|            | 420 | 95  | 3.0 | 1530.0      | 7200.0                   | <b>81260</b>   |
| <b>320</b> | 400 | 63  | 2.0 | 880.0       | 4650.0                   | <b>81164</b>   |
|            | 440 | 95  | 3.0 | 1560.0      | 7500.0                   | <b>81264</b>   |
| <b>340</b> | 420 | 64  | 2.0 | 900.0       | 4900.0                   | <b>81168</b>   |
|            | 460 | 96  | 3.0 | 1630.0      | 8000.0                   | <b>81268</b>   |
| <b>360</b> | 440 | 65  | 2.0 | 915.0       | 5000.0                   | <b>81172</b>   |
|            | 500 | 110 | 4.0 | 2160.0      | 10400.0                  | <b>81272</b>   |
| <b>380</b> | 460 | 65  | 2.0 | 930.0       | 5300.0                   | <b>81176</b>   |
|            | 520 | 112 | 4.0 | 2200.0      | 10800.0                  | <b>81276</b>   |

| Dimensions |     |     |     | Load Rating |                          | AEC<br>Bearing |
|------------|-----|-----|-----|-------------|--------------------------|----------------|
| mm         |     |     |     | kN          |                          |                |
| d          | D   | B   | r   | Dynamic (C) | Static (C <sub>0</sub> ) |                |
| <b>400</b> | 480 | 65  | 2.0 | 965.0       | 5600.0                   | <b>81180</b>   |
|            | 540 | 112 | 4.0 | 2240.0      | 11200.0                  | <b>81280</b>   |
| <b>420</b> | 500 | 65  | 2.0 | 980.0       | 5850.0                   | <b>81184</b>   |
|            | 580 | 130 | 5.0 | 2850.0      | 14000.0                  | <b>81284</b>   |
| <b>440</b> | 540 | 80  | 2.1 | 1430.0      | 8000.0                   | <b>81188</b>   |
|            | 600 | 130 | 5.0 | 2900.0      | 14600.0                  | <b>81288</b>   |
| <b>460</b> | 560 | 80  | 2.1 | 1460.0      | 8500.0                   | <b>81192</b>   |
|            | 620 | 130 | 5.0 | 3000.0      | 15300.0                  | <b>81292</b>   |
| <b>480</b> | 580 | 80  | 2.1 | 1460.0      | 8650.0                   | <b>81196</b>   |
|            | 650 | 135 | 5.0 | 3350.0      | 17000.0                  | <b>81296</b>   |
| <b>500</b> | 600 | 80  | 2.1 | 1530.0      | 9150.0                   | <b>811/500</b> |
|            | 670 | 135 | 5.0 | 3400.0      | 17600.0                  | <b>812/500</b> |
| <b>530</b> | 640 | 85  | 3.0 | 1700.0      | 10400.0                  | <b>811/530</b> |
|            | 710 | 140 | 5.0 | 3800.0      | 20000.0                  | <b>812/530</b> |
| <b>560</b> | 670 | 85  | 3.0 | 1760.0      | 10800.0                  | <b>811/560</b> |
|            | 750 | 150 | 5.0 | 3900.0      | 20800.0                  | <b>812/560</b> |
| <b>600</b> | 710 | 85  | 3.0 | 1760.0      | 11200.0                  | <b>811/600</b> |
|            | 800 | 160 | 5.0 | 4400.0      | 24000.0                  | <b>812/600</b> |
| <b>630</b> | 750 | 95  | 3.0 | 2160.0      | 13700.0                  | <b>811/630</b> |